

MARK™ TEAM WENDY RAIL KIT

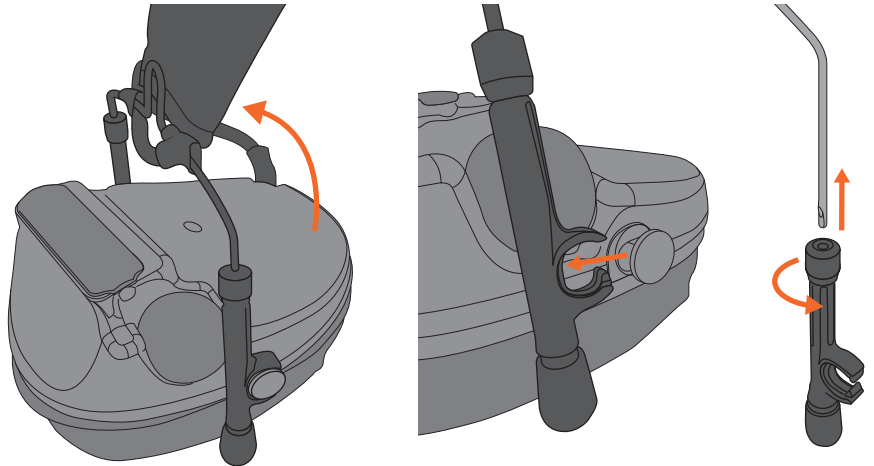
INSTALLATION INSTRUCTIONS



⚠ BEFORE INSTALLATION

Remove headset from OEM headband assembly.

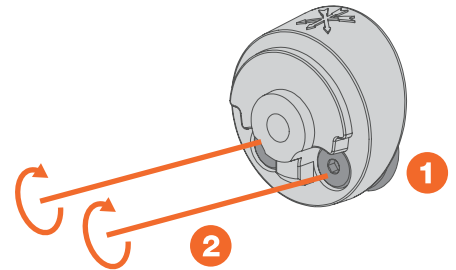
1. Pivot headband stems from 90° on ear cups to line up flats on posts.
2. Pop stems off posts.
3. Turn stems 90° on wire forms and pull off wires.
4. Reassemble in reverse order on MARK wire forms.



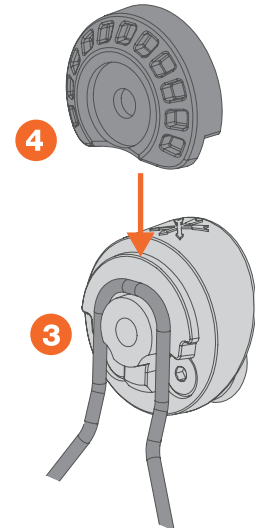
INSTALLATION

Remove Center Screw/Washer, Top Cap, and Wire Form from hub assembly. Loosen the two Low-Profile Screws, creating a very slight gap. Do not release backer plate from MARK Lower Assembly.

NOTE: For installation onto EXFIL 3.0, the rail section must be removed from the helmet. T-Slot Backer must be removed from MARK Rear Section, placed behind rail and reattached to Rear Section with hardware through the slit.

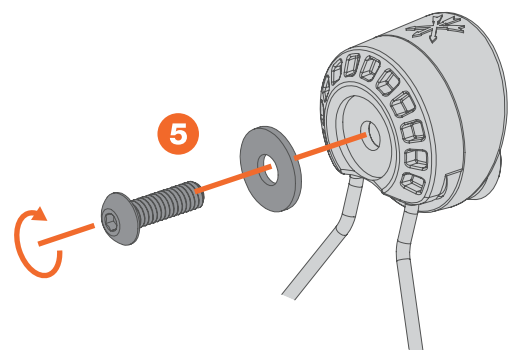


- 1 Slide MARK EXFIL Backer Lower Assembly into desired position on helmet EXFIL Rail.
- 2 Once assembly is in desired location, tighten Low-Profile Screws (finger tight).
- 3 Place MARK Wire Form Arm with attached OEM headset onto installed MARK Lower Assembly.
- 4 Slide MARK Top Cap onto MARK Lower Assembly from the top down.
- 5 Reinstall Washer and Center Screw. The screw should be finger tight. Tension adjustment can be made from there depending on individual preference. MARK is designed to pivot on rail for stowage when not in use.



3

NOTE: MARK System can be used with MSA/Sordin-based headsets with addition of UNITY Tactical SARA (Sordin ARC Rail Adapter) Kit, sold separately.



4

5